

DEPARTMENT OF THE ARMY TECHNICAL MANUAL

ORGANIZATIONAL MAINTENANCE REPAIR PARTS
AND SPECIAL TOOLS LISTS
TEST SET, ELECTRON TUBE TV-13A/U
FSN 6625-753-2294

Headquarters, Department of the Army, Washington, D.C.
15 August 1973

Current as of January 1973

	Paragraph	Page
SECTION I. INTRODUCTION		
Scope	1-1	2
General	1-2	2
Explanation of columns	1-3	2
Special Information	1-4	5
Location of repair parts	1-5	5
Abbreviations (Not applicable)	1-6	5
Reporting of equipment publication improvements	1-7	5
PRESCRIBED LOAD ALLOWANCE		
(Not applicable)		
III. REPAIR PARTS LIST		6
IV. SPECIAL TOOLS, TEST AND SUPPORT EQUIPMENT		
(Not applicable)		
V. INDEX - FEDERAL STOCK NUMBER AND REFERENCE NUMBER		
CROSS-REFERENCE TO FIGURE AND ITEM NUMBER		7

* This manual supersedes TM11-6625-404-20P, 21 March 1962.

SECTION I

INTRODUCTION

1-1. Scope

This manual lists repair parts and special tools required for the performance of organizational maintenance of the TV-13A/U. The PCCN for the TV-13A/U is GTEABU for all models.

1-2. General

This repair parts and special tools list is divided into the following sections:

a. Prescribed Load Allowance (PLA) — Section II. Not applicable.

b. Repair Parts List — Section III. A list of repair parts authorized for the performance of maintenance at the organizational level. This repair parts list is arranged in alphabetical order.

c. Special Tools, Test and Support Equipment — Section IV. Not applicable.

d. Index — Federal Stock Number and Reference Number Cross-Reference to Figure and Item Number — Section V. A list, in ascending numerical sequence, of all Federal stock numbers appearing in the listings, followed by a list, in alphabetic sequence, of all reference numbers appearing in the listings. Federal stock number and reference numbers are cross-referenced to each illustration figure and item number or reference designation appearance.

1-3. Explanation of Columns

The following provides an explanation of columns in the tabular lists —

a. Source, Maintenance, and Recoverability Codes (SMR).

(1) *Source code.* Indicates the manner of acquiring support items for maintenance, repair, or overhaul of end items. Source codes are —

<i>Code</i>	<i>Explanation</i>
PA —	Item procured and stocked for anticipated or known usage.
PB —	Item procured and stocked for insurance purposes because essen-

Code

Explanation

	tiality dictates that a minimum quantity be available in the supply systems.
PC —	Item procured and stocked and which otherwise would be coded PA except that it is deteriorative in nature.
PD —	Support item, excluding support equipment, procured for initial issue or outfitting and stocked only for subsequent or additional initial issues or outfittings. Not subject to automatic replenishment.
PE —	Support equipment procured and stocked for initial issue or outfitting to specified maintenance repair activities.
PF —	Support equipment which will not be stocked but which will be centrally procured on demand.
PG —	Item procured and stocked to provide for sustained support for the life of the equipment. It is applied to an item peculiar to the equipment which because of probable discontinuance or shutdown of production facilities would prove uneconomical to reproduce at a later time.
KD —	An item of depot overhaul/repair kit and not purchased separately. Depot kit defined as a kit that provides items required at the time of overhaul or repair.
KF —	An item of a maintenance kit and not purchased separately. Maintenance kit defined as a kit that provides an item that can be replaced at organizational or direct support or general support levels of maintenance.
KB —	Item included in both a depot overhaul/repair kit and a maintenance kit.

<i>Code</i>	<i>Explanation</i>
MO —	Item to be manufactured or fabricated at organizational level.
MF —	Item to be manufactured or fabricated at direct support maintenance level.
MH —	Item to be manufactured or fabricated at general support maintenance level.
MD —	Item to be manufactured or fabricated at depot maintenance level.
AO —	Item to be assembled at organizational level.
AF —	Item to be assembled at direct support maintenance level.
AH —	Item to be assembled at general support maintenance level.
AD —	Item to be assembled at depot maintenance level.
XA —	Item is not procured or stocked because the requirements for the item will result in the replacement of the next higher assembly.
XB —	Item is not procured or stocked. If not available through salvage, requisition.
XC —	Installation drawing, diagram instruction sheet, field service drawing, that is identified by an manufacturers' part number.
XD —	Support items can be requisitioned with justification.

NOTE

Cannibalization or salvage may be used as a source of supply for any items source coded above except those coded XA and aircraft support items as restricted by AR 700-42.

(2) *Maintenance code.* Maintenance codes are assigned to indicate the levels of maintenance authorized to USE and REPAIR support items. The maintenance codes are entered in the third and fourth positions of the Uniform SMR Code Format as follows—

(a) *Use (third position).* The maintenance code entered in the third position indicates the lowest maintenance level author-

ized to remove, replace, and use the support item. The maintenance code entered in the third position indicates one of the following levels of maintenance.

<i>Code</i>	<i>Application/Explanation</i>
O —	Support item is removed, replaced, used at the organizational level of maintenance.

NOTE

A code "C" may be used in this position to denote crew or operator maintenance performed within organizational maintenance.

F —	Support item is removed, replaced, used at the direct support maintenance level.
H —	Support item is removed, replaced, used at the general support maintenance.
D —	Support items that are removed, replaced, used at depot only.

(b) *Repair (fourth position).* The maintenance code entered in the fourth position indicates whether the item is to be repaired and identifies the lowest maintenance level with the capability to perform complete repair (i.e., all authorized maintenance functions). When a maintenance code is not used a dash (-) sign is entered. For multi-service equipment/systems or when a code is entered, this position will contain one of the following maintenance codes as assigned by the service(s) that require the code—

<i>Code</i>	<i>Application/Explanation</i>
O —	The lowest maintenance level capable of complete repair of the support item is the organizational level.
F —	The lowest maintenance level capable of complete repair of the support item is direct support.
H —	The lowest maintenance level capable of complete repair of the support item is general support.
D —	The lowest maintenance level capable of complete repair of the support item is the depot level.
L —	Repair restricted to designated Specialized Repair Activity.

Code	Application/Explanation
Z —	Non-repairable. No repair is authorized.
B —	No repair is authorized. The item may be reconditioned by adjusting, lubricating, etc., at the user level. No parts or special tools are procured for the maintenance of this item.

(3) *Recoverability code.* Recoverability codes are assigned to support items to indicate the disposition action on unserviceable items. The recoverability code is entered in the fifth position of the uniform SMR Code Format as follows —

Code	Explanation
Z —	Nonrepairable item. When unserviceable, condemn and dispose at the level indicated in the first digit of the maintenance code.
O —	Repairable item. When uneconomically repairable, condemn and dispose at organizational level.
F —	Repairable item. When uneconomically repairable, condemn and dispose at the direct support level.
H —	Repairable item. When uneconomically repairable, condemn and dispose at the general support level.
D —	Repairable item. When beyond lower level repair capability, return to depot. Condemnation and disposal not authorized below depot level.
L —	Repairable item. Repair, condemnation, and disposal not authorized below depot/Specialized Repair Activity level.
A —	Item required special handling or condemnation procedures because of specific reasons (i.e., precious metal content, high dollar value, critical material or hazardous material).

b. Federal Stock Number. Indicates the Federal stock number assigned to the item and will be used for requisitioning purposes.

c. Description. Indicates the Federal

item name and a minimum description required to identify the item. The last line indicates the reference number followed by the applicable Federal Supply Code for Manufacturer (FSCM) in parentheses. The FSCM is used as an element in item identification to designate manufacturer or distributor or Government agency, etc., and is identified in SB 708-42.

d. Unit of Measure (U/M) Indicates the standard or basic quantity by which the listed item is used in performing the actual maintenance function. This measure is expressed by a two-character alphabetical abbreviation; e.g., ea, in, pr, etc., and is the basis used to indicate quantities and allowances in subsequent columns. When the unit of measure differs from the unit of issue, the lowest unit of issue that will satisfy the required units of measure will be requisitioned.

e. Quantity Incorporated in Unit. This column indicates the quantity of the item used in the equipment. Subsequent appearances of the same item in the same assembly are indicated by the letters "REF".

f. 15-Day Organizational Maintenance Allowance.

(1) The repair parts indicated by an asterisk in the allowance column represent those authorized for use at the organizational category, and will be requisitioned on an "as required" basis, until stockage is based on demand in accordance with AR 710-2.

(2) Major Army commanders are authorized to approve reduction in the range of support items authorized for use in units within their commands. Recommendations for increase in range of items authorized for use will be forwarded to Commander, US Army Electronics Command, ATTN: AMSEL-MACRA, Fort Monmouth, N.J., 07703. Any changes approved will be reflected in a revision to the RPSTL.

(3) Allowance quantities are indicated in the special tools list section for special tools, TMDE, and other equipment.

g. Illustration. This column is divided as follows:

(1) *Figure number.* Indicates the figure number of the illustration on which the item is shown in TM 11-6625-404-12.

(2) *Item number.* Indicates the item number or reference designation used to reference the item in the illustration.

1-4. Special Information

a. Usable on codes are included in column 3. Uncoded items are applicable to all models. Identification of the usable on codes used in this publication are —

<i>Code</i>	<i>Used on</i>
AMS	TV-13A/U

b. The following publication pertains to the TV-13A/U and its components:

TM 11-6625-404-12	Operator and Organizational Maintenance Manual: Test Set, Electron Tube TV-13A/U.
-------------------	---

1-5. Location of Repair Parts

a. This manual contains one cross-reference index (sec. V) to be used to locate a repair part when either the Federal stock number or reference number (manufacturer's part number) is known. The first column in the index is prepared in numerical or alphanumeric sequence in ascending order. The reference numbers (manufacturer's part numbers) are listed immediately following the

last listed Federal stock number in the index of Federal stock numbers.

b. When the Federal stock number or reference number is known, follow the procedures given in (1) and (2) below.

(1) Refer to the index of Federal stock numbers (sec. V) and locate the Federal stock number or reference number. The FSN and reference number are cross-referenced to the applicable figure and item number or reference designation.

(2) Refer to the repair parts list (sec. III) and locate the figure number (col. 7a) and item number or reference designation (col. 7b) as noted in the FSN index.

c. When the figure and item number or reference designation are known, scrutinize columns 7a and 7b of the repair parts list (sec. III) until the item is located.

d. When the FSN, reference number, figure number, item number and reference designation are not known, scrutinize column 3 of the repair parts list (sec. III), which is arranged in alphabetical order.

1-6. Abbreviations

Not applicable.

1-7. Reporting of Equipment Publication Improvements

The reporting of errors, omissions, and recommendations for improving this publication by the individual user is encouraged. Reports should be submitted on DA Form 2028 (Recommended Changes to Publications) and forwarded direct to Commander, US Army Electronics Command, ATTN: AMSEL-MA-CRA, Fort Monmouth, N.J., 07703.

(Next Printed Page is 6.)

SECTION III

TM11-6625-404-20P

(1) SIR CODE	(2)	(3) DESCRIPTION REFERENCE NUMBER & MFR CODE	(4) UNIT OF MEAS	(5) QTY. INC IN UNIT	(6) 15-DAY ORGANIZATIONAL MAINTENANCE ALW				(7) ILLUSTRATION	
					(a)	(b)	(c)	(d)	(a)	(b)
					1-5	6-20	21-50	51-100	FIGURE NO.	ITEM NO.
PAOZZ	5935-853-6004	ADAPTER, ELECTRON TUBE SOCKET NO-REF-DESIG..... 78-901 (02660)	EA	4	*	*	*	*		
PAOZZ	6625-870-2268	COVER ASSEMBLY NO-REF-DESIG SHEET METAL, INCL SW AND CONNECTOR C114560 (82199)	EA	1	*	*	*	*		
PAOZZ	5935-897-9858	COVER, ELECTRICAL CONNECTOR NO-REF-DESIG 1 7/16 IN LG X 9/16 IN WD X 1/8 IN D AP21027 (82199)	EA	1	*	*	*	*		
PAOZZ	5935-897-9859	COVER, ELECTRON TUBE SOCKET NO-REF-DESIG 1 3/4 IN LG X 7/8 IN WD 1/8 IN D AP20915 (82199)	EA	2	*	*	*	*		
PAOZZ	5935-853-5872	COVER, ELECTRON TUBE SOCKET NO-REF-DESIG 2 7/8 IN LG, 2 1/4 WD X 1/8 IN THK AP20922 (82199)	EA	2	*	*	*	*		
PAOZZ	6625-870-2265	COVER, MECHANICAL NO-REF-DESIG ALUMINUM 6 7/8. IN LG X 4 13/16 IN WD X 3 1/2 IN H C113408 (82199)	EA	1	*	*	*	*		
PAOZZ	5960-060-3450	ELECTRON TUBE V1..... 3B29 (79026)	EA	1	*	*	*	*	12	V1
PAOZZ	5960-272-9182	ELECTRON TUBE V2..... 6X4W (81349)	EA	4	*	*	*	*	12	V2
PAOZZ	5960-272-9182	ELECTRON TUBE V3..... 6X4W (81349)	EA	REF	*	*	*	*	12	V3
PAOZZ	5960-272-9182	ELECTRON TUBE V4..... 6X4W (81349)	EA	REF	*	*	*	*	12	V4
PAOZZ	5960-272-9182	ELECTRON TUBE V5..... 6X4W (81349)	EA	REF	*	*	*	*	12	V5
PAOZZ		KNOB NO-REF-DESIG..... S626-36 (75376)	EA	4	*	*	*	*		
PAOZZ	5355-823-9862	KNOB NO-REF-DESIG W/POINTER FL36-3L88 (41226)	EA	11	*	*	*	*		
PAOZZ	6240-179-1812	LAMP, GLOW DS4..... NE48 (24446)	EA	1	*	*	*	*		3DS4
PAOZZ	6240-223-9100	LAMP, GLOW DS1..... NE51 (24446)	EA	3	*	*	*	*		3DS1
PAOZZ	6240-223-9100	LAMP, GLOW DS2..... NE51 (24446)	EA	REF	*	*	*	*		3DS2
PAOZZ	6240-223-3100	LAMP, GLOW DS3..... NE51 (24446)	EA	REF	*	*	*	*		3DS3
PAOZZ	5945-823-2377	RELAY, ARMATURE K3 SPDT 5J016000S (78277)	EA	1	*	*	*	*	12	K3
PAOZZ	5945-223-7262	RELAY, THERMAL K1 115 V, 2 W 2 HEATER..... ELEMENTS 115N060 (70563)	EA	1	*	*	*	*	12	K1
PAOZZ	5960-295-7652	SHIELD, ELECTRON TUBE EV1..... TS102U03 (81349)	EA	4	*	*	*	*		EV1
PAOZZ	5960-295-7652	SHIELD, ELECTRON TUBE EV2..... TS102U03 (81349)	EA	REF	*	*	*	*		EV2
PAOZZ	5960-295-7652	SHIELD, ELECTRON TUBE EV3..... TS102U03 (81349)	EA	REF	*	*	*	*		EV3
PAOZZ	5960-295-7652	SHIELD, ELECTRON TUBE EV4..... TS102U03 (81349)	EA	REF	*	*	*	*		EV4
PAOZZ	5920-010-6652	FUSE, CARTRIDGE F1 3AMP, 250V 3AG1043(79515)	EA	2	*	*	*	*	7	F1
PAOZZ	5920-010-6652	FUSE, CARTRIDGE F2 3 AMP, 250V 3AG1043(79515)	EA	2	*	*	*	*	7	F2

LMC F-1M

ORGANIZATIONAL REPAIR PARTS/TOOLS LIST

INDEX - FEDERAL STOCK NUMBER AND REFERENCE NUMBER
CROSS-REFERENCE TO FIGURE AND ITEM NUMBER

STOCK NUMBER	FIGURE NO.	ITEM NO.	STOCK NUMBER	FIGURE NO.	ITEM NO.
5935-823-9812					
5935-823-9812	7	71			
5935-823-9812	7	72			
5935-853-5872			5960-295-7652		EV1
5935-853-6084			5960-295-7652		EV2
5935-897-9858			5960-295-7652		EV3
5935-897-9859			5960-295-7652		EV4
5945-223-7262	12	K1	6240-179-1812		3DS4
5945-823-2377	12	K3	6240-223-9100		3DS1
5960-060-2450	12	V1	6240-223-9100		3DS2
5960-272-9182	3	V2	6240-223-9100		3DS3
5960-272-9182	3	V3	6625-870-2285		
5960-272-9182	3	V4	6625-870-2268		
5960-272-9182	3	V5			

REFERENCE MO.	MFG CODE	FIG. NO.	ITEM No.	REFERENCE NO.	MFR CODE	FIG. NO.	ITEM NO.
AP28915	82199			TS102U03	81349		EV2
AP20922	82199			TS102U03	81349		EV3
AP21027	82199			TS102UD3	81349		EV4
C113408	82199			115NO60	70563	12	K1
C114560	82199			3829	79026	3	V1
FL36-3LBB	41226.			5J016000S	79277	12	K3
NE48	24446		30S4	6X4W	81349	3	V2
NE51	24446		3DS1	6X4W	81349	3	V3
NS51	24446		3DS2	6X4W	81349	3	V4
NE51	24446		3DS3	6X4W	81349	3	V5
S626-36	75376			78-901	02660		
TS102U03	81349		EV1				

By Order of the Secretary of the Army:

CREIGHTON W. ABRAMS
General, United States Army,
Chief of Staff.

Official:

VERNE L. BOWERS,
Major General, United States Army,
The Adjutant General.

Distribution:

Active Army:

USASA (3)	USAADS (2)
CNGB (1)	USAFAS (2)
ACSC-E (2)	USAARMS (2)
USAARENBD (2)	USAIS (2)
USAMB (10)	USAES (2)
AMC (1)	AD (2) except
MICOM (2)	SAAD (30)
TECOM (2)	LEAD (14)
USASTRATCOM (4)	TOAD (14)
HISA (ECOM) (18)	ATAD (10)
CONARC (5)	LEAD (7)
ARADCOM (2)	Gen Dep (2)
ARADCOM Rgn (2)	Sig Sec, Gen Dep (2)
OS Maj Comd (4)	Sig Dep (5)
LOGCOMD (5)	MAAG (1)
USACDCEC (5)	WRAMC (1)
MDW (1)	USARMIS (1)
Armies (2)	USAERDAA (1)
Corps (2)	USAERDAW (1)
Instl (2) except	Sig FLDMS (1)
Ft Gordon (10)	Ft Richardson (ECOM Ofc) (2)
Ft Huachuca (10)	Units org under fol TOE: 1 ea.
Ft Carson (10)	11-158
Svc Colleges (2)	29-134
USASESS (5)	29-136
USAINTS (3)	

NG: State AG (3): Units - Same as Active Army.

USAR: None.

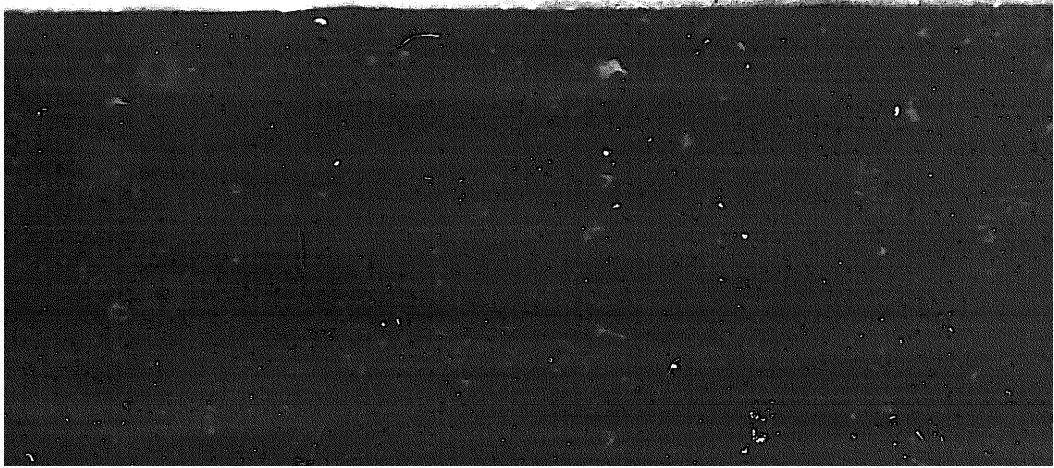
For explanation of abbreviations used, see AR 310-50.

END

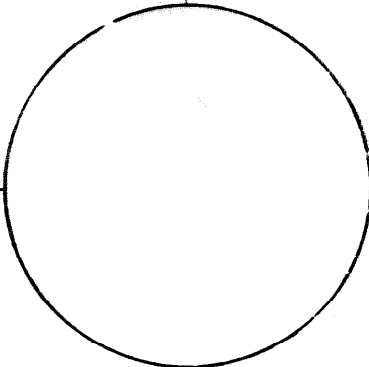
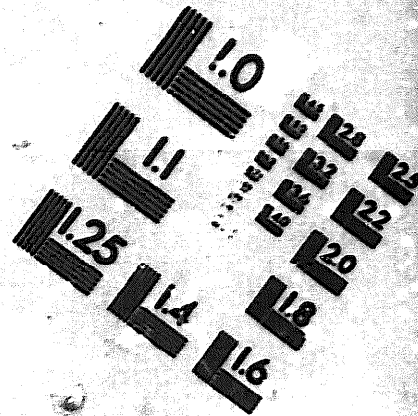
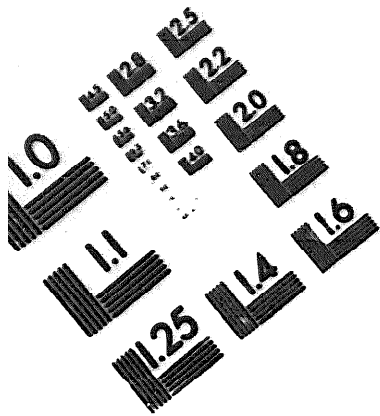
7-25-83

DATE





DEPARTMENT OF THE ARMY
MICROFORM
TEST TARGET



150 MM

1.0 mm (e= .31 mm)

ABCDEFGHIJKLMN OPQRSTUVWXYZ 1234567890
abcdefghijklmnopqrstuvwxyz \$%& /%# 1/2 1/4 —+ x&@*

1.5 mm (e= 1.09 mm)

ABCDEFGHIJKLMN OPQRSTUVWXYZ 1234567890
abcdefghijklmnopqrstuvwxyz \$%& /%# 1/2 1/4 —+ x&@*

2.0 mm (e= 1.37 mm)

ABCDEFGHIJKLMN OPQRSTUVWXYZ
abcdefghijklmnopqrstuvwxyz
1234567890 \$%& /%# 1/2 1/4 —+ x&@*

2.5 mm (e= 1.77 mm)

ABCDEFGHIJKLMN OPQRSTUVWXYZ
abcdefghijklmnopqrstuvwxyz
1234567890 \$%& /%# 1/2 1/4 —+ x&@*

1.0 mm (e= .31 mm)

ABCDEFGHIJKLMN OPQRSTUVWXYZ 1234567890
abcdefghijklmnopqrstuvwxyz \$%& /%# 1/2 1/4 —+ x&@*

1.5 mm (e= 1.09 mm)

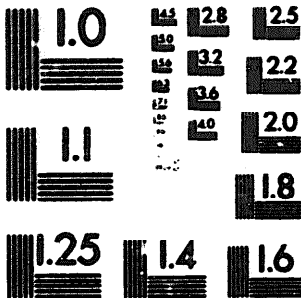
ABCDEFGHIJKLMN OPQRSTUVWXYZ 1234567890
abcdefghijklmnopqrstuvwxyz \$%& /%# 1/2 1/4 —+ x&@*

2.0 mm (e= 1.37 mm)

ABCDEFGHIJKLMN OPQRSTUVWXYZ
abcdefghijklmnopqrstuvwxyz
1234567890 \$%& /%# 1/2 1/4 —+ x&@*

2.5 mm (e= 1.77 mm)

ABCDEFGHIJKLMN OPQRSTUVWXYZ
abcdefghijklmnopqrstuvwxyz
1234567890 \$%& /%# 1/2 1/4 —+ x&@*



200 MM

250 MM

